



**LEVEL 1
HEMISPHERIC
PRIORITIZATION**

Full annual cycle for migratory birds, coarse resolution, co-produced with partners



**SELECTION 1
REGION
SELECTION**

Based on capacity and interest



**LEVEL 2
REGIONAL
PRIORITIZATION**

Migratory and/or resident birds, fine resolution, co-produced with partners



**SELECTION 2
SITE
SELECTION**

Based on local capacity, interest, and feasibility



**LEVEL 3
LOCAL
CONSERVATION
WORK**

On-the-ground conservation in collaboration with local partners

Why Wood Thrush?

- Flight Plan priority indicator species
- Charismatic: iconic song
- Breeding range extends across NY and CT
- Hemispheric connectivity: Long-distance migratory bird, non-breeding range in central America
- Umbrella species whose diverse habitat needs benefit other priority species: *Scarlet Tanager*, *Cerulean Warbler*, *Golden-winged Warbler*, *Kentucky Warbler*, *American Woodcock*, *Yellow-billed Cuckoo*, *Black-billed Cuckoo*, *Broad-winged Hawk*, *Prairie Warbler*, and *Rose-breasted Grosbeak*





The Wood Thrush Project: Breeding Habitat

- Improve forest bird breeding habitat, health, resiliency, carbon capture (NCS) to benefit Wood Thrush and other priority birds
 - Engage regional partners (e.g. land trusts) in forest habitat management through trainings/programming
- Monitor forest birds: breeding bird surveys (ARUs), Motus
 - Bird Friendliness Index
 - eBird: regional conservation impact

The Bird-Friendliness Index Turns Sounds into Insights

Bird-Friendliness Index Components:

Bird observations

Bird abundance
or occupancy



Bird vulnerability

Conservation status



Western
Kingbird: 7



Chestnut-
collared
Longspur: 15



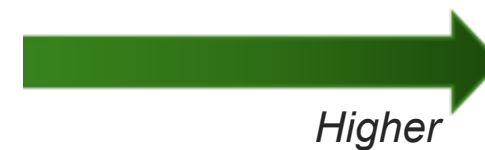
Michel et al. 2020

Turning Sounds into Insights

We use acoustic data to calculate **Bird Friendliness Index**



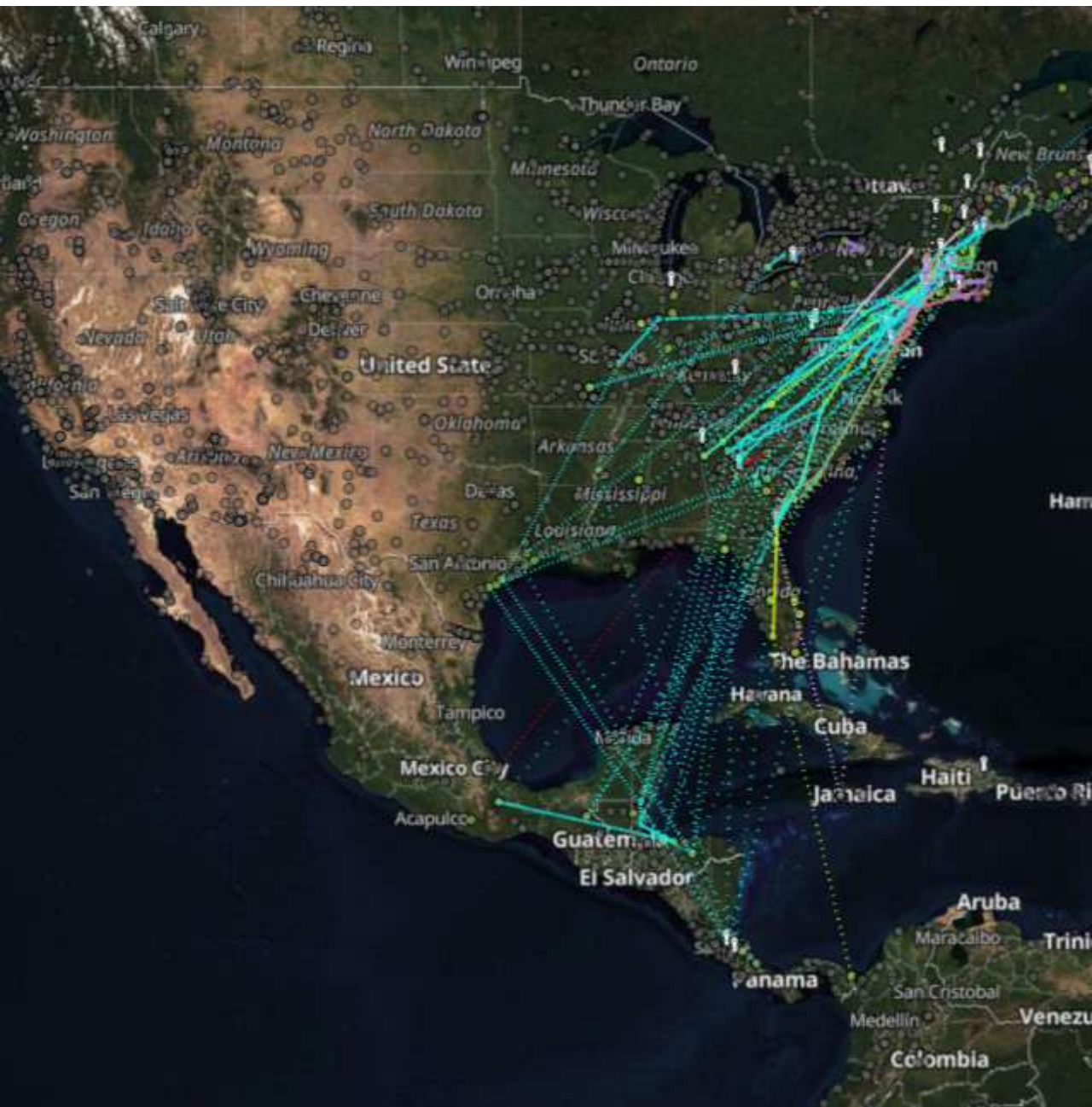
BFI



The Bent welcomes Motus!

- A generous donation equipped us with the shiny new tech
- Tower went up in August 2023
- Sensor went online late March 2024
- Our first ping...





Motus showed us... ... the birds!

- After a year and a half of "pings": there was an unmistakable trend:
- The Bent of the River is a **Wood Thrush hot spot** and on a Wood Thrush flight path.
- What's more – we knew where they nested on the property...
- USFWS "WOTHParty" study participation 2 summers with Junior Forest Technician program involvement.

Forging a Collaboration with the Forest Team

- **Forest Team calls**
- **Learning about Bird-friendly forestry and Full Annual Cycle Conservation**
- **Getting a grant from CLCC to have a new Forest Stewardship Plan**
- **Working with Audubon-endorsed forester Eric Hansen to secure grants and contract work**
- **Involving youth leadership program, Junior Forest Technicians**





Litchfield Hills Greenprint Collaborative

Regional Land Trust Collaborations

Leverage strength of existing relationships with conservation partners.

Greenprint: 40+ land trusts & 169,000 acres in NW CT.

Planning educational forest bird program to engage regional conservation partners, followed by an invite to a daylong training about bird-friendly forestry and the Wood Thrush Project

Pilot endorsement program with regional conservation partners

Species	Tag deployment	Station	Last detected	Arrival date	Travelling from	Distance travelled
<u>Wood Thrush</u>	<u>64318</u>	<u>Parque Ecológico Las Orquídeas</u>	2025-11-06	2025-11-06	BFREE Belize	343 km
<u>Wood Thrush</u>	<u>64318</u>	<u>BFREE Belize</u>	2025-11-05	2025-11-05	GA SSI DOCK	1800 km
<u>Wood Thrush</u>	<u>64318</u>	<u>GA SSI DOCK</u>	2025-10-10	2025-10-10	Port Royal Sound Foundation	129 km
<u>Wood Thrush</u>	<u>64318</u>	<u>Port Royal Sound Foundation</u>	2025-10-10	2025-10-10	Dak Spring Garden Foundation	780 km

Recentring the Bent on Forest Habitat Management

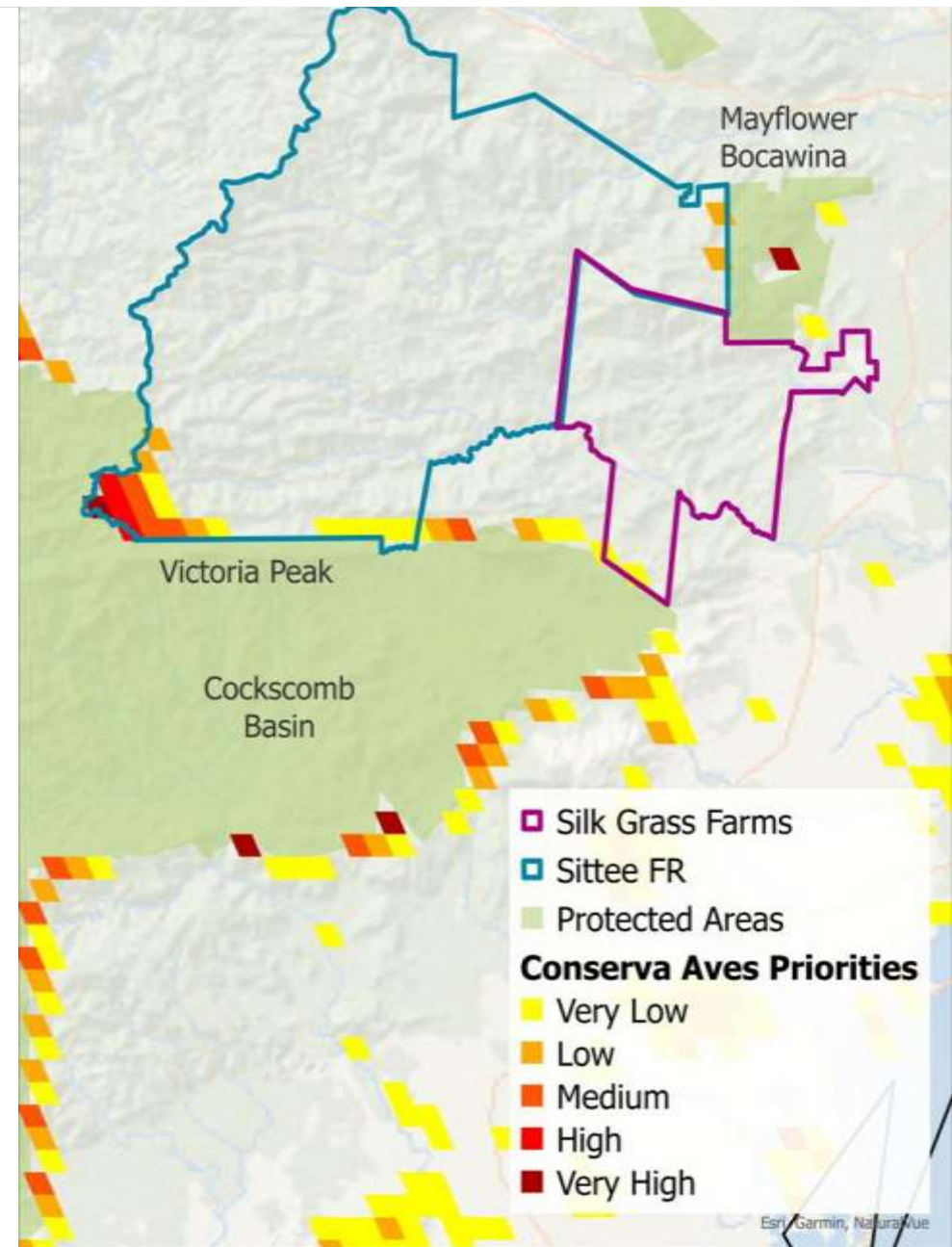
- Hiring someone who straddles habitat stewardship and outreach
- BFI/NCS Demonstration plots to train land stewards, foresters, and landowners
- Collaborating with Belize Audubon on Habitat Conservation

The “Wood Thrush” Project

(Forest Bird Conservation Project)

Overwintering:

- Bird-friendly Forestry (Mexico, Colombia, Chile)
- Regenerative Agriculture (Belize, Central America)
- Pilot the Bird-friendliness Index
- Nanotags, Motus, Monitoring
- Interns, volunteers, public education, Centers, story-telling
- Chapters?



Examples of Bird-friendly regenerative practices

Increase connectivity across productive areas and forested/protected areas

- Agroforestry systems (shade-grown cacao)
- Riparian habitat and biological corridors
- Isolated trees as stepping stones
- Bushes for pollinators and beneficial insects that improve pest control



Corridors. Photo: Andrés Estefan



Protected riparian habitat. Photo: Andrés Estefan.



Bushes for pollinators. Photo: Jair Coll.

How can chapters become involved with and contribute to hemispheric forest bird conservation?

Please brainstorm project ideas to share with this group.